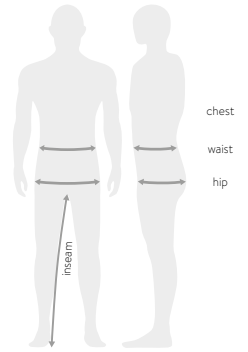


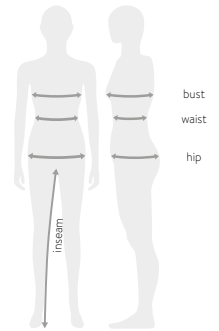
APPAREL

SIZE CHART

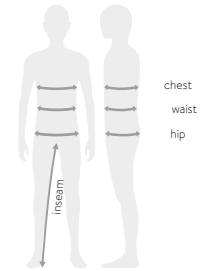
MEN												
INTERNATIONAL	XS		S		M		L		XL		XXL	
GERMANY	42/44		44/46		46/48		50/52		54/56		58	
UK	32/34		34/36		36/38		40/42		44/46		48	
FRANCE	36		38		40		42		44		46	
PANTS (INCH)	28		30		32		34		36		38	
	CM	IN	CM	IN	CM	IN	CM	IN	CM	IN	CM	IN
CHEST	86-92	34-36	92-96	36-38	96-102	38-40	102-108	40-42,5	108-114	42,5-45	114-121	45-47,5
WAIST	71-76	28-30	76-81	30-32	81-86,5	32-34	86,5-91,5	34-36	91,5-99	36-39	99-106,5	39-42
HIP	86,5-91,5	34-36	91,5-96,5	36-38	96,5-101,5	38-40	101,5-106,5	40-42	106,5-111,5	42-44	111,5-117	44-46
INSEAM	79-81	31	81-83	32	83-85	33	85-87	34	87-89	35	89-91	36



WOMEN												
INTERNATIONAL	EU-XS/US-XXS-0		EU-S/US-XS-2		EU-M/US-S-4/6		EU-L/US-M-8/10		EU-XL/US-L-12		EU-XXL/US-XL-14	
GERMANY	34/36		36/38		38/40		40/42		42/44		44/46	
UK	6/8		8/10		10/12		12/14		14/16		16	
FRANCE	36		38		40		42		44		46	
PANTS (INCH)	26		28		30		32		34		34	
	CM	IN	CM	IN	CM	IN	CM	IN	CM	IN	CM	IN
BUST	79-84	31-33	84-89	33-35	89-94	35-37	94-100	37-39,5	100-106	39,5-42	106-113	42-44,5
WAIST	61-66	24-26	66-71	26-28	71-76	28-30	79-85	31-33,5	85-91,5	33,5-36	91,5-98	36-38,5
HIP	86-91	34-36	91-96	36-38	96-102	38-40	102-107	40-42	107-113	42-44,5	113-119	44,5-47
INSEAM	76-78	30,5	77-79	31	78-80	31,5	79-81	32	80-82	32,5	81-83	33

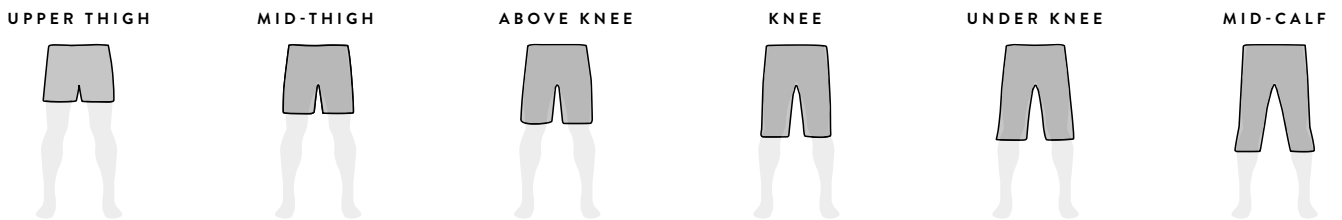


JUNIOR												
INTERNATIONAL	XXS 4 (104)		XS 6 (116)		S 8 (128)		M 10 (140)		L 12 (152)		XL 14 (164)	
AGE	4		6		8		10		12		14	
	CM	IN	CM	IN	CM	IN	CM	IN	CM	IN	CM	IN
CHEST	49-54	19,25-21,25	54,5-59,5	21,5-23,5	60-66	24-26	67-72,5	26,5-28,5	73,5-78,5	29-31	79-84	31-33
WAIST	43-48	17-19	48-53,5	19-21	53,5-58,5	21-23	58,5-63,5	23-25	63,5-68,5	25-27	68,5-73,5	27-29
HIP	53,5-58,5	21-23	59,5-65	23,5-25,5	66-71	26-28	72-78	28,5-30,5	79-84	31-33	85-90	33,5-35,5
INSEAM	43-48	17-19	49,5-54,5	19,5-21,5	56-61	22-24	62-67	24,5-26,5	68-73	26,5-28,5	74-79	29-31



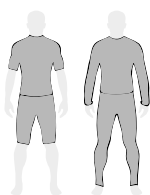
SHORTS LENGTH

The length is always depending on the body height and the body proportion on each person.



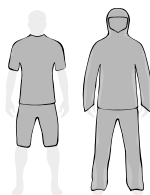
FIT GUIDE

To accommodate the needs of a wide range of athletes and end users, SCOTT has developed a comprehensive fit system to meet the needs of each individual.



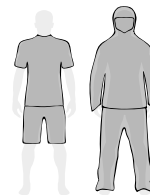
SLIM FIT

Narrow cut lines conform to the body's contour for the closest fit.



ATHLETIC FIT

Performance cut lines produce a close-fit ideal for active pursuits.



REGULAR FIT

Traditional cut lines for a stylish look and a classic fit.

HELMETS

SIZE CHART

MODEL	ONE SIZE	XS	XS/S	S	S/M	M	M/L	L	XL	
CADENCE PLUS CENTRIC PLUS FUGA PLUS ARX PLUS ARX STEGO PLUS VIVO PLUS LA MOKKA PLUS IL DOPPIO PLUS IL DOPPIO RISTRETTO TAGO PLUS				51-55		55-59		59-61		CM
				20-21.75		21.75-23.25		23.25-24		INCHES
SPLIT PLUS GROOVE PLUS					52-58		57-62			CM
					20.4-22.8		22.45-24.4			INCHES
SUPRA	54-61									CM
	21.25-24									INCHES
SUPRA PLUS					52-57		56-61			CM
					20.5-22.4		22-24			INCHES
JIBE					54-58		58-61			CM
					21.25-22.8		22.8-24			INCHES
ARGO PLUS					54-58		58-61			CM
					21.25-22.8		22.8-24			INCHES
ARGO PLUS JUNIOR			49-53							CM
			19.29-20.85							INCHES
SPUNTO JUNIOR SPUNTO JUNIOR PLUS	50-56									CM
	19.7-22									INCHES
SPUNTO KID	46-52									CM
	18.1-20.4									INCHES

GLOVES

SIZE CHART

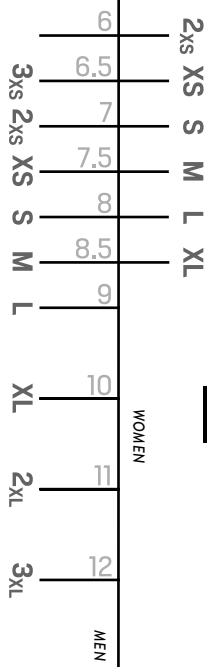
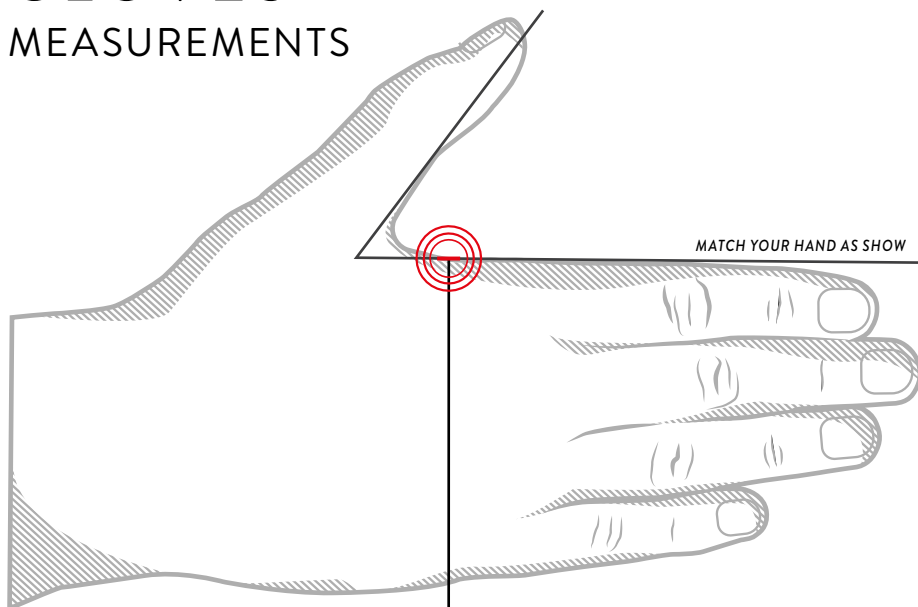
UNISEX																		
SIZE	3XS		2XS		XS		S		M		L		XL		2XL		3XL	
NUMERIC SIZE	6.5		7		7.5		8		8.5		9		10		11		12	
	CM	IN	CM	IN	CM	IN	CM	IN	CM	IN	CM	IN	CM	IN	CM	IN	CM	IN
HAND CIRCUMFERENCE	15.2 - 16.5	6 - 6.5	16.5 - 17.8	6.5 - 7	17.8 - 19.1	7 - 7.5	19.1 - 20.3	7.5 - 8	20.3 - 21.6	8 - 8.5	21.6 - 22.9	8.5 - 9	22.9 - 25.4	9 - 10	25.4 - 27.9	10 - 11	27.9 - 30.5	11 - 12
HAND LENGHT	14.5 - 16	5.7 - 6.3	15.5 - 17	6.1 - 6.7	16.5 - 18	6.5 - 7.1	17.5 - 19	6.9 - 7.5	18.5 - 20	7.3 - 7.9	19.5 - 21	7.7 - 8.3	20.5 - 22	8.1 - 8.7	21.5 - 23	8.5 - 9.1	22.5 - 24	8.9 - 9.4
HAND WIDTH	6.5	2.4	7	2.7	7.5	2.7	8	3.1	8.5	3.1	9.5	3.5	10.5	3.9	11.5	4.3	13	4.7

* PLEASE REFER TO THE DOCUMENTS TAB FOR HAND MEASUREMENT GUIDELINE

KIDS/JUNIOR											
SIZE	XS		S		M		L		XL		
NUMERIC SIZE	5		5.5		6		6.5		7		
	CM	IN	CM	IN	CM	IN	CM	IN	CM	IN	
HAND CIRCUMFERENCE	11.4 - 12.7	4.5 - 5	12.7 - 14	5 - 5.5	14 - 15.2	5.5 - 6	15.2 - 16.5	6 - 6.5	16.5 - 17.8	6.5 - 7	
HAND LENGHT	11.5 - 13	4.5 - 5.1	12.5 - 14	4.9 - 5.5	13.5 - 15	5.3 - 5.9	14.5 - 16	5.7 - 6.3	15.5 - 17	6.1 - 6.7	

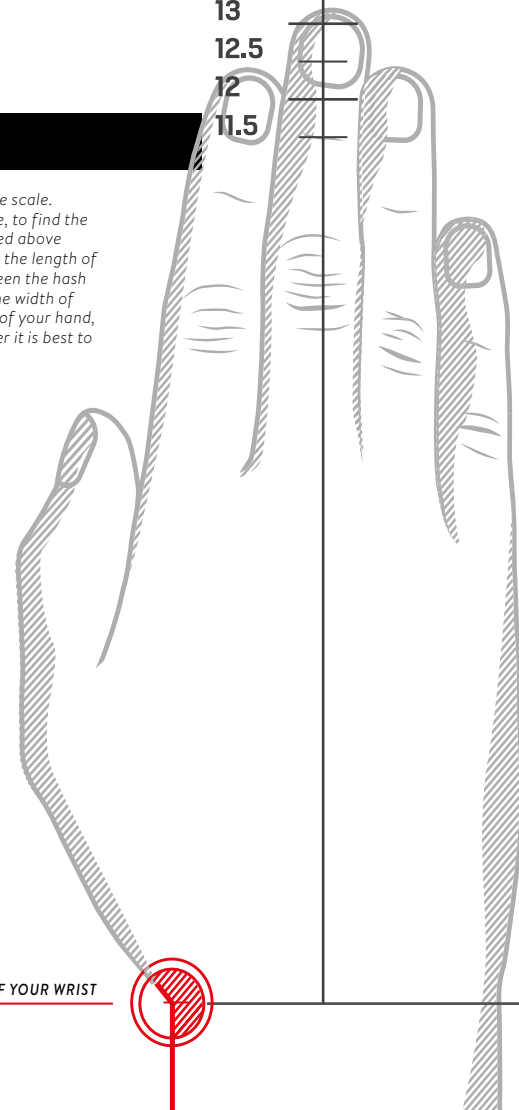
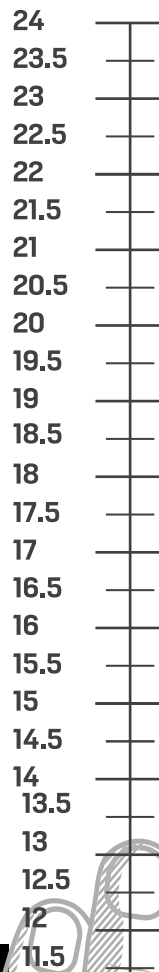
GLOVES

MEASUREMENTS



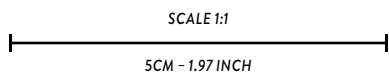
HAND'S LENGTH

Place your right hand as shown on the scale. Position your wrist, on the thumb side, to find the correct position. The number indicated above your middle finger hash marks reveal the length of your fingers. If your finger is in between the hash marks you should choose based on the width of your hand. The main size is the width of your hand, but if your hand is considerably longer it is best to choose the larger size.



HAND'S WIDTH

Place your right hand as shown. The lines on the left should match to your index finger and thumb. If your hand lays flat as mentioned on the scale you can read your correct size on the right side of your hand. If you're in between two sizes it's better to take the bigger one.



MATCH THE EDGE OF YOUR WRIST

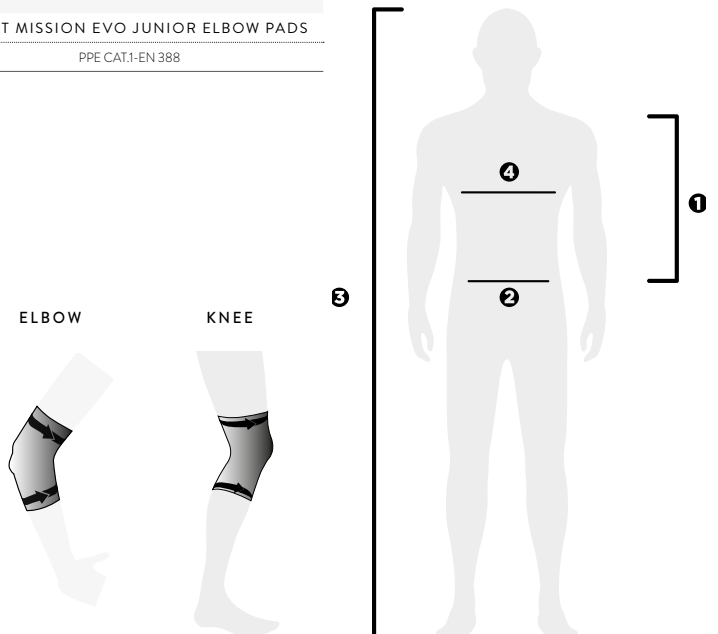
PROTECTION

SIZE CHART

UNISEX											
POSITION	S		M		L		XL		XXL		
	CM	IN	CM	IN	CM	IN	CM	IN	CM	IN	
⑤ HEIGHT	155	61	160	63	170	67	180	71	195	77	SCOTT SOFTCON HYBRID PRO JACKET PROTECTOR
① TORSO LENGTH	39-44	15.5-17.5	39-44	15.5-17.5	42-47	16.5-18.5	44-49	17.5-19.5	44-49	17.5-19.5	
④ CHEST	89-94	35-37	95-102	37.5-40	103-109	40.5-43	110-117	43.5-46	118-124	46.5-49	
② WAIST	74-79	29-31	80-86	31.5-34	87-91	34.5-36	92-97	36-38	98-102	38.5-40	
UNISEX											
POSITION	S		M		L		XL		XXL		
	CM	IN	CM	IN	CM	IN	CM	IN	CM	IN	
⑤ HEIGHT	155	61	160	63	170	67	180	71	195	77	SCOTT SOFTCON AIR JACKET PROTECTOR
① TORSO LENGTH	35-40	14-15.5	39-44	15.5-17.5	39-44	15.5-17.5	42-47	16.5-18.5	42-47	16.5-18.5	
④ CHEST	89-94	35-37	95-102	37.5-40	103-109	40.5-43	110-117	43.5-46	118-124	46.5-49	
② WAIST	74-79	29-31	80-86	31.5-34	87-91	34.5-36	92-97	36-38	98-102	38.5-40	
UNISEX											
POSITION	S		M		L		XL		XXL		
	CM	IN	CM	IN	CM	IN	CM	IN	CM	IN	
⑤ HEIGHT	155	61	160	63	170	67	180	71	195	77	SCOTT SOFTCON HYBRID PRO VEST PROTECTOR
① TORSO LENGTH	39-44	15.5-17.5	39-44	15.5-17.5	42-47	16.5-18.5	44-49	17.5-19.5	44-49	17.5-19.5	
④ CHEST	89-94	35-37	95-102	37.5-40	103-109	40.5-43	110-117	43.5-46	118-124	46.5-49	
② WAIST	74-79	29-31	80-86	31.5-34	87-91	34.5-36	92-97	36-38	98-102	38.5-40	
UNISEX											
POSITION	XS/S		M/L		XL/2XL						
	CM	IN	CM	IN	CM	IN	CM	IN	CM	IN	
① TORSO LENGTH	39-44	15.5-17.5	42-47	16.5-18.5	44-49	17.5-19.5					SCOTT SOFTCON HYBRID PRO VEST PROTECTOR
④ CHEST	75-85	29.5-33.5	85-105	33.5-41.5	105-122	41.5-48					
UNISEX											
POSITION	XS/S		M/L		XL/2XL						
	CM	IN	CM	IN	CM	IN	CM	IN	CM	IN	
① TORSO LENGTH	35-40	14-15.5	35-40	14-15.5	39-44	15.5-17.5					SCOTT SOFTCON AIR BODY ARMOR
④ CHEST	75-85	29.5-33.5	85-105	33.5-41.5	105-122	41.5-48					
UNISEX											
POSITION	S		M		L		XL				
	CM	IN	CM	IN	CM	IN	CM	IN	CM	IN	
⑤ HEIGHT	< 170	< 67	170-180	67-71	180-185	71-73	> 185	> 73			SCOTT VANGUARD EVO VEST PROTECTOR
① TORSO LENGTH	34-40	14-15.5	39-44	15.5-17.5	37-44	15.5-17.5	42-47	16.5-18.5			
UNISEX											
POSITION	S/M		L/XL		XL/2XL						
	CM	IN	CM	IN	CM	IN	CM	IN	CM	IN	
① TORSO LENGTH	< 170	< 67	170-185	67-73	> 185	> 73					SCOTT AIRFLEX PRO BACK PROTECTOR
④ CHEST	39-44	15.5-17.5	42-47	16.5-18.5	44-49	17.5-19.5					
UNISEX											
POSITION	S		M		L		XL		XXL		
	CM	IN	CM	IN	CM	IN	CM	IN	CM	IN	
⑤ HEIGHT	< 165	< 65	165-170	65-67	170-180	67-71	180-185	71-73	> 185	> 73	SCOTT AIRFLEX BACK PROTECTOR
① TORSO LENGTH	35-40	14-15.5	35-40	14-15.5	39-44	15.5-17.5	42-47	16.5-18.5	44-49	17.5-19.5	
UNISEX											
POSITION	S		M		L		XL				
	CM	IN	CM	IN	CM	IN	CM	IN	CM	IN	
④ CHEST	75-85	29.5-33.5	85-95	33.5-37.5	95-105	37.5-41.5	105-120	41.5-47			SCOTT PROTECTIVE BASE LAYER
UNISEX											
POSITION	S		M		L		XL				
	CM	IN	CM	IN	CM	IN	CM	IN	CM	IN	
② WAIST	74-79	29-31	79-84	31-33	84-89	33-35	92-96	36-38			SCOTT AIRFLEX SHORT PROTECTOR
UNISEX											
POSITION	S		M		L						
	CM	IN	CM	IN	CM	IN	CM	IN	CM	IN	
TOP OPENING	37-39	14.5-15.5	39-42	15.5-16.5	42-45	16.5-17.5					SCOTT GRENADE EVO ZIP KNEE GUARDS SCOTT GRENADE EVO ZIP KNEE GUARDS SCOTT GRENADE EVO HYBRID KNEE GUARDS
BOTTOM OPENING	31-33	12-13	33-35	13-14	36-38	14-15					
UNISEX											
POSITION	S		M		L		XL				
	CM	IN	CM	IN	CM	IN	CM	IN	CM	IN	
TOP OPENING	42-45	16.5-17.5	44-48	17-19	47-52	18.5-20.5	51-56	20-22			SCOTT SOLDIER GHOST KNEE GUARDS SCOTT SOLDIER KNEE GUARDS
BOTTOM OPENING	33-36	13-14	35-38	14-15	37-40	14.5-16	39-44	15.5-17.5			

POSITION	S		M		L		XL		
	CM	IN	CM	IN	CM	IN	CM	IN	
BICEP OPENING	23-26	9-10	26-29	10-11.5	29-32	11.5-12.5	32-35	12.5-14	SCOTT GRENADE EVO ELBOW GUARD SCOTT SOLDIER GHOST ELBOW GUARDS SCOTT SOLIDER ELBOW GUARDS
FOREARM OPENING	20-24	8-9.5	24-28	9.5-11	28-31	11-12	31-34	12-13.5	Hips: EN 1621-1 Level 1
POSITION	S		M		L		XL		
	CM	IN	CM	IN	CM	IN	CM	IN	
TOP OPENING	39-42	15.5-16.5	42-45	16.5-17.5	45-48	17.5-19	48-50	19-19.5	SCOTT MISSION EVO KNEE PADS
BOTTOM OPENING	32-35	12.5-14	35-38	14-15	37-41	15-16	41-43	16-17	PPE CAT.1-EN 388
POSITION	S		M		L		XL		
	CM	IN	CM	IN	CM	IN	CM	IN	
BICEPS OPENING	23-26	9-10	26-29	10-11.5	29-32	11.5-12.5	32-35	12.5-14	SCOTT MISSION EVO ELBOW PADS
FOREARM OPENING	20-24	8-9.5	24-28	9.5-11	28-31	11-12	31-34	12-13.5	PPE CAT.1-EN 388

JUNIOR									
POSITION	XXS		XS		S		M		
	CM	IN	CM	IN	CM	IN	CM	IN	
⑤ HEIGHT	116	45.5	128	50.5	140	55	152	60	SCOTT SOFTCON JUNIOR JACKET PROTECTOR
① TORSO LENGTH	28-31	11-12	28-31	11-12	31-35	12-14	35-40	14-15.5	Back: EN 1621-2 Level 1, Chest: EN 1621-3 Level 1 and EN 14021
POSITION	XXS/XS				S/M				
	CM		IN		CM		IN		
⑤ HEIGHT	116-118		45.5-50.5		140-152		55-60		SCOTT JACKET PROTECTOR SOFTCON JUNIOR
① TORSO LENGTH	28-31		11-12		31-35		12-14		Back: EN 1621-2 Level 1, Chest: EN 1621-3 Level 1 and EN 14021
POSITION	XXS		XS		S		M		
	CM	IN	CM	IN	CM	IN	CM	IN	
⑤ HEIGHT	110-124	43.5-49	124-140	49-55	140-155	55-61	155-170	61-67	SCOTT AIRFLEX JUNIOR BACK PROTECTOR
① TORSO LENGTH	28-31	11-12	31-35	12-14	35-40	14-15.5	39-44	15.5-17.5	Back: EN 1621-2 Level 1
POSITION	XXS		XS		S		M		
	CM	IN	CM	IN	CM	IN	CM	IN	
TOP OPENING	26-28	10-11	28-30	11-12	30-32	12-12.5	32-34	12.5-13.5	SCOTT SOFTCON JUNIOR KNEE GUARD
	EN 1621-1 Level 1								
POSITION	XXS		XS		S		M		
	CM	IN	CM	IN	CM	IN	CM	IN	
TOP OPENING	17-21	6.5-8.5	19-21	7.5-8.5	21-23	8.5-9	23-25	9-10	SCOTT SOFTCON JUNIOR ELBOW GUARD
	EN 1621-1 Level 1								
POSITION	XXS		XS						
	CM	IN	CM	IN					
TOP OPENING	33-36	13-14	39-42	15.5-16.5	SCOTT MISSION EVO JUNIOR KNEE PADS				
BOTTOM OPENING	26-29	10-11.5	33-35	13-14	PPE CAT.1-EN 388				
POSITION	XXS		XS						
	CM	IN	CM	IN					
TOP OPENING	17-20	6.5-8	20-23	8-9	SCOTT MISSION EVO JUNIOR ELBOW PADS				
BOTTOM OPENING	14-17	5.5-6.5	17-20	6.5-8	PPE CAT.1-EN 388				



FOOTWEAR

SIZE CHART

MEN																	
USA	4.5	5	5.5	6.5	7	8	8.25	8.5	9	9.5	9.75	10	10.5	11	11.5	12.5	13
UK	4	4.5	5	6	6.5	7.5	7.75	8	8.5	9	9.25	9.5	10	10.5	11	12	12.5
EUR	36	37	38	39	40	41	41.5	42	42.5	43	43.5	44	44.5	45	46	47	48
JPN	22.5	23	23.5	24.5	25	26	26.25	26.5	27	27.5	27.8	28	28.5	29	30	31	32

WOMEN							
USA	5	6	6.5	7.5	8	9	9.5
UK	3.5	4.5	5	6	6.5	7.5	8
EUR	36	37	38	39	40	41	42
JPN	22	23	23.5	24.5	25	26	26.5

JUNIOR											
USA	12.75	13.5	15	2.25	3	3.5	4.5	5	5.5	6.5	7
UK	12.25	13	1	1.75	2.5	3	4	4.5	5	6	6.5
EUR	30	31	32	33	34	35	36	37	38	39	40
JPN	18.5	19.25	20	20.5	21.25	22	22.5	23	23.5	24.5	25

STIFFNESS INDEX

■ Men ■ Women ■ Future Pro

	ROAD	GRAVEL	MTB	SPORT
RACING	10 ■ 296549 ■ 288796 ■ 296550		 ■ 296555 ■ 288810 ■ 296556 ■ 288811	
	9 ■ 296551 ■ 296552 ■ 288797 ■ 296553 ■ 275887 ■ 296554		 ■ 296557 ■ 296558 ■ 296559	
PERFORMANCE	8 ■ 281195 ■ 288800 ■ 281199	 ■ 421019	 ■ 281206 ■ 281215	
	7 ■ 296560 ■ 296562			
SPORT	6 ■ 270595 ■ 251817 ■ 275885 ■ 270596 ■ 251824 ■ 275890	 ■ 288805 ■ 288807	 ■ 270599 ■ 275894 ■ 251834 ■ 281208 ■ 270600 ■ 251838 ■ 275899 ■ 270603	 ■ 288824 ■ 281217 ■ 296564 ■ 296566 ■ 288828 ■ 288830 ■ 288832 ■ 281221 ■ 296568 ■ 296570 ■ 288840 ■ 288842 ■ 288844

RUNNING FOOTWEAR

SIZE CHART

MEN														
USA	7.0	7.5	8.0	8.5	9.0	9.5	10.0	10.5	11.0	11.5	12.0	12.5	13.0	14.0
UK	6.0	6.5	7.0	7.5	8.0	8.5	9.0	9.5	10.0	10.5	11.0	11.5	12.0	13.0
EUR	40.0	40.5	41.0	42.0	42.5	43.0	44.0	44.5	45.0	45.5	46.0	47.0	47.5	48.5
JPN (CM)	25.0	25.5	26.0	26.5	27.0	27.5	28.0	28.5	29.0	29.5	30.0	30.5	31.0	32.0

WOMEN												
USA	5.5	6.0	6.5	7.0	7.5	8.0	8.5	9.0	9.5	10.0	10.5	11.0
UK	3	3.5	4.0	4.5	5.0	5.5	6.0	6.5	7.0	7.5	8.0	8.5
EUR	36	36.5	37.5	38.0	38.5	39.0	40.0	40.5	41.0	42.0	42.5	43.0
JPN (CM)	21.5	23.0	23.5	24.0	24.5	25.0	25.5	26.0	26.5	27.0	27.5	28.0

GLOSSARY

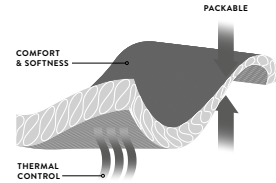
APPAREL

INSULATION



DUROLOFT

DUROloft insulation traps warmth in air pockets, providing great thermal insulation / DUROloft Eco has the same properties as DUROloft but is made of recycled and recyclable fibers / DUROloft Bio is a mix of wool and Polylactic acid fibers, a bioplastic derived from renewable resources. DUROloft combines the great thermoregulating and antibacterial properties of wool with the lightness and quick-dry properties of synthetic fiber. All DUROloft insulations are available in different weights and combined with different fabrics, to cater for all your outdoor activities.



DUROLOFT ECO

DUROloft use hydrophobic synthetic fibers arranged to mimic the structure of down. It traps warmth in air pockets, providing great thermal insulation. DUROloft Eco has the same properties than DUROloft but is made of recycled and recyclable fibers.



DUROLOFT BIO

DUROloft use hydrophobic synthetic fibers arranged to mimic the structure of down. It traps warmth in air pockets, providing great thermal insulation. DUROloft Bio is a mix of wool and Polylactic acid fibers, a bioplastic derived from renewable resources. It combines the great thermoregulation and antibacterial properties of wool with the lightness and quick dry properties of synthetic fiber.



TORAY™ AIRTASTIC®

The Toray™ Airtastic® fabric is one of the lightest fabrics available (40g/m²). Suitable for lightweight insulated jackets and other clothing, the fabric has a unique air permeability control technology and a soft touch.



MERINO WOOL

Merino wool helps to keep cool in summer and warm in the winter. The structure of the fiber naturally traps air which promotes excellent insulation. Merino has a good moisture management and an excellent odor resistance which is really well received into the sports apparel. Merino garments are soft and comfortable against the skin.



MERINO ADVANCED PERFORMANCE PROMISE (MAPP)

MAPP is absolute assurance that the Merino you have purchased has been tested for fibre strength and consistency, and passed. That means it will perform exactly as high quality Merino should with the highest environmental standards and which carry both ISO 9000, 2015 and Blue Sign System Partner accreditation.



POLARTEC® DELTA™

Polartec® Delta™ was created so cooling fabric technologies could better utilize the body's natural cooling process — sweat. Next-to-skin fabrics that target wicking and fast drying will keep moisture moving, but don't work towards actually cooling the body down. Delta™ works more efficiently by elevating touch-points for increased airflow, faster moisture dispersal, and reduced wet-cling.



POLARTEC® ALPHA®

Polartec® Alpha® is the first high performance fabric to materialize the concept of active insulation. The low density fibers between air permeable woven layers create a more efficient fabric for regulating warmth and transferring moisture. It speeds up dry times.



PRIMALOFT® GOLD INSULATION WITH CROSS CORE TECHNOLOGY

It is a revolutionary fusion of multiple Primaloft® technologies to create a product with warmth and comfort protection never achieved with a synthetic insulation. The insulation has a high warmth-to-weight ratio, is water resistant which make it lighter and more packable. It is also developed with 35% post consumer recycled content.

QUICK-DRYING & HIGHLY BREATHABLE FABRICS



DRYOXCELL

DRYOxcell is a quick-dry technology that wicks moisture away from the skin and disperses it in the fabric over a larger area, protecting against saturation. This accelerates evaporation and keeps you drier, longer.



DRIRELEASE® ECO

The unique Drirelease® custom blend of synthetic and natural fibers accelerates the water release rate of the fabrics pushing water and perspiration to the outside of the garment into the air, faster than other performance fabrics available on the market, without chemicals. The performance of drirelease is permanent and eco-friendly.



DRIRELEASE®

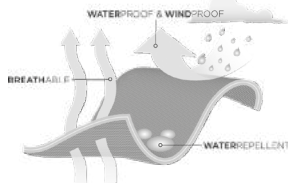
The patented, unique blend of synthetic and natural fibers in Drirelease® yarn actually accelerates the water release rate of the fabrics. Rather than just spreading moisture across the surface, Drirelease® fabrics push water and perspiration to the outside of a garment, releasing it into the air faster than other performance fabrics on the market. And with FreshGuard® embedded into all Drirelease® fabrics, every performance blend offered delivers unmatched odor control as well.

WIND & WATER PROTECTION



DRYOSPHERE

DRYOsphere fabrics provide a waterproof/breathable barrier from the elements. A shield against water and wind, DRYOsphere fabric also allows for water vapor to escape from the body, keeping you dry and comfortable in any condition.



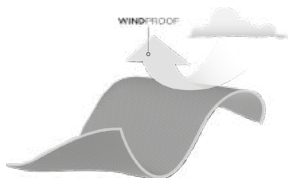
DRYOZONE DWR

The first line of defense against precipitation, DRYOzone DWR (durable water repellent) is applied to fabrics to protect against saturation season after season.



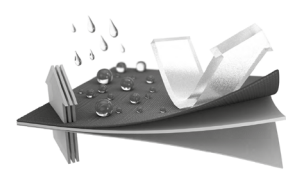
DUROBREEZE

DUROBreeze fabrics act as a barrier against the wind. This windproof technology works by resisting wind penetration, helping prevent heat loss during breezy conditions.



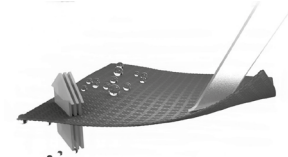
PERTEX® SHIELD

Pertex® Shield delivers lightweight and packable waterproof protection whilst remaining highly breathable.



PERTEX® QUANTUM AIR

Pertex® Quantum Air is engineered with increased air permeability to provide a balance between wind resistance and breathability.



GORE-TEX PERFORMANCE GARMENTS

Designed for when your outdoor adventures get wet—very wet. Whether you're exploring a national park with friends on a multi-day trekking trip in pouring rain, or encountering heavy snowfalls when riding the perfect tree run, these totally water- and windproof garments with the GUARANTEED TO KEEP YOU DRY™ promise provide long-lasting breathability and solid protection so you can take your journey further.



DERMIZAX® EV 3L

Dermizax® EV membrane is waterproof, windproof, and wicking. It uses moving molecules, instead of micropores like the other brands; this makes Dermizax® high-performing and durable. The membrane is also flexible; it can be stretched up to twice its own length in four directions.



GORE-TEX INFINIUM™ WINDSTOPPER® GARMENTS

Products engineered with GORE-TEX INFINIUM™ WINDSTOPPER® product technology offer absolute windproofness while being extremely breathable. The latest enhancements to our GORE-TEX INFINIUM™ WINDSTOPPER® laminates are designed for exceptional skin comfort.

OTHER TECHNOLOGIES



RE-SOURCE

At SCOTT, we believe of doing things the right way and for the right reasons. We are committed to improving the impacts of our products and business practices, preserving the environment for future generations and stimulating positive change in our communities.



3D MOLD

3D injection système increases the safety of the key parts while maintaining a very soft and flexible fit. Material follow the hand and stays close to the skin.



CSR RECYCLED POLYESTER

All of our recycled polyester comes from post-consumer recycled PET bottles and diverts waste from ending up in landfills or the environment.



DRYOSPUN

DRYOsPun is our newest fabric. Built with a 3-layer construction, it integrates a new membrane created using an electrospinning technique. Nozzles project a charged polyurethane solution onto a surface, which results in the creation of micropores and an air-permeable and waterproof structure. DRYOsPun keeps you dry and cool during all your high-intensity training in the mountains.



GROWIT

With the new SCOTT GROW-IT technology, our skiwear grows with your kids. Our new technology allows our jackets and pants to be used for multiple seasons.



CORDURA®

Designed for living and built to last, the original durable CORDURA® fabric has proven performance in many of the world's toughest environments. Made with high tenacity air jet textured nylon 6,6 filament yarns.



CO DWR OR PFC-FREE

Perfluorinated and polyfluorinated compounds, also known as PFCs, are a group of fluorinated substances that have long been used as durable water repellence for clothing in the outdoor industry are very bad for the environment because they are very stable, and do not easily break down in nature. Therefore, PFC free/ CO DWR treatments have been developed. They are less durable but more sustainable.



PONTETORTO TECNOWOOL

Tecnowool offers fantastic natural color combinations that can only be achieved in wool. The internal polyester dries rapidly, while the wool on the outer layer absorbs the water vapor to let it slowly evaporate into the air. The combination of the Pile and carded wool offers a thermal comfort that no other product can reach. The carded wool used is mostly recycled and is not treated with chlorine. The polyester on the inside stabilizes the fabric so that it can be machine washed.



KINETECH™

Kinetch™ is all about the creation of fabrics that help the human body as it strives to achieve best performance in sport at highest level. Kinetch™ is a registered trademark of Tessitura Taiana Virgilio S.p.A.



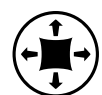
ECOYA®

Ecoya® is a type of solution dyed yarn. Most of the dying process is omitted as the color masterbatch is added to the polymer melt before it is extruded into fiber. It's great for the environment.



SCHOELLER®

Schoeller® fabrics and technologies stand for high quality and innovative textile solutions, and are produced under the "Schoeller® Switzerland" brand using the most modern industrial equipment.



DUROXPAND

A four-way stretch fabric, DUROxpand gives you the freedom of movement and flexibility for adventures that require a greater range of motion.

